

SOUTH LOCALITY PLAN 2022

INTRODUCTION

Doncaster is a “place of places” with diverse communities, different strengths and equally variable needs. The locality approach is a way in which Doncaster Council and partners can get closer to communities to understand these strengths and different needs. By hearing from them what it is like to live in different neighbourhoods across the borough we will be able to shape our services, strategies and investment to better reflect these differences.

At the core of this approach is the commitment to hear the voices of local people, to understand the strengths in our neighbourhoods and build capacity in communities so that they can take control of their own destiny. No one person or place should be left behind.

There are four strands to the locality approach:

- We must engage with and empower local communities, understanding their strengths and supporting them on their own terms. We call this “Asset Based Community Development”.
- We must coordinate our services, and our partners on each locality footprint, especially ensuring that people, families and communities with the most needs receive a joined up response. We call this “Local Solutions”.
- We must attract investment into our Localities and make best use of our existing resources, so that funding supports the changes that local people want to see on the issues where need is greatest. “Locality Commissioning”.
- We must tie the above actions together so that there is a local deal for each of our communities that reflects their needs and aspirations. This will be done by developing a series of “Locality Plans”.

This is the first version of the South Locality Plan.

WHAT IS A LOCALITY PLAN?

Locality plans will look at how we can work together to strengthen communities and improve the lives and opportunities for the residents living there.

A locality plan needs to be ever changing in line with the needs of the community. In 2019, we could never have predicted the impact a global pandemic could have had on residents of Doncaster, so it is important that these plans remain agile and cognisant of the different situations and external factors that are impacting on communities.

The first iteration of this South Locality Plan will look to:

- Define the priorities for improving the area over the next year
- Showcase how resources will be deployed at a local level to support and facilitate real change within communities
- Truly understand the different communities that make up the South Locality
- Provide a steer on how we will implement wider strategies, at community level

In bringing this plan together we have asked, and will continue to ask, local people across Doncaster what would make the area better.

The following pages highlight what is good about our local communities and what you would like to see improve....

WHAT IS THE SOUTH LOCALITY?

For the purpose of delivering the locality approach, Doncaster has been split into four localities, each consisting of a number of different communities.

The 'South' locality includes the following wards:

- Bawtry & Rossington
- Conisbrough & Denaby
- Edlington & Warmsworth
- Finningley
- Mexborough
- Tickhill & Wadworth

Although each of the above wards are grouped under the South locality, they will all also be considered and supported for the unique communities they are.

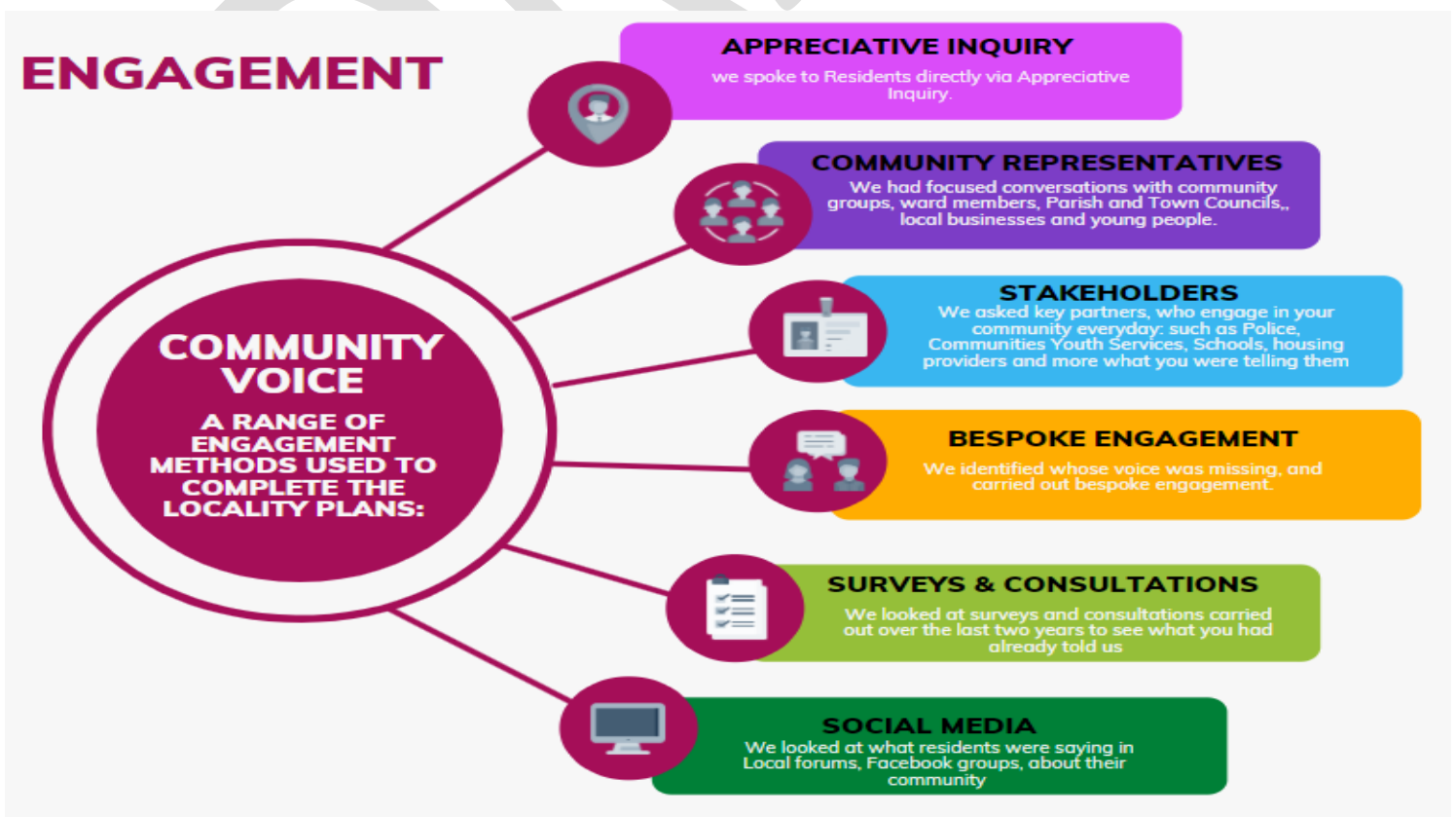
The South Locality is home to Doncaster Airport, Yorkshire Wildlife Park, Conisbrough, and Tickhill Castles. It has great access to Green Space and walks. It has great transport links with the Doncaster train service running through Mexborough and Conisbrough & Denaby wards, and great access to motorways.

The South also has two of Doncaster's town Centres, Bawtry and Mexborough, attracting visitors, Business and Investment opportunities. There are a number of parks and green space for recreation, Warmsworth Park, Denaby Craggs, Edlington Pit Wood, West End Lane. Canal walks, Conisbrough Viaduct and the Trans Pennine Trail.

HOW DID WE ENGAGE AND CAPTURE THE VOICE OF EACH COMMUNITY?

In order to develop this plan, extensive research was undertaken with the people who live, and often work. In the South Locality. Although we have lots of data and population breakdown information about the different communities, there is no replacement for getting the views directly of the people who know the area best – those who live there.

To understand what people 'like' about their community and what they would like to see 'improve' in each community, we used various engagement methods and channels of communication to gather information to inform this plan. These include;



WHAT DO RESIDENTS THINK OF THE SOUTH LOCALITY?

WE ASKED, YOU SAID ...

We asked

What do you like about where you live?

What would you like to improve?

You said

Like

- Community Spirit
- Amenities, shops and Towns
- Green space

Improve

- Improved community safety
- Improved environment and green space
- Improved youth provision
- Improved local amenities and town centres

"It's surrounded by a huge green belt of land which makes contact to nature really easy. It is close to large towns and cities"

"I Like the green space, and want to protect them"

"I Love that the wild Life park is close by"

"I Want Less crime, be able to feel safe on the streets, more police needed"

"It used to be a thriving market town...The good shops and market...You could get everything you needed"

"I can see the Castle from my House; shops are close by, everything I need really"

"I want somewhere to hang out"

"Residents get involved and take responsibility for their own community"

"The community spirit has always been strong"



Rossington & Bawtry

Overview

The Ward is made up of 3 villages, Bawtry, Rossington and Austerfield. With a population of 17,775

Bawtry is a market town with a Town Council. It has many shops Bars & restaurants adding to the thriving Market Town feel. The town is just south of Doncaster Sheffield Airport.

Austerfield is a small village, it is home to the Field Study Centre and surround by Green Space and has a rural feel.

Rossington is a civil parish and former mining village and is surrounded by and, has great access to greenspace and countryside. The 'Old Village' and 'New Village' are separated by the East Coast Main Line, which runs through the village. Rossington has great access to motorway links.

This ward has the following plans: Bawtry Neighbourhood plan, Rossington Neighbourhood plan, Rossington Well Doncaster plan

Key facts about your community

All age Population
of **17,775**

Healthy Life
Expectancy- (in % avg.)
Males: 78.1
Females: 79.9

18% of
Rossington & Bawtry
ward are in England's
most deprived 10%

Crime Rate
83 per 1000
population

17%
Of households in
fuel poverty

ASB Crime Rate
16 per 1000
population

5%
Of working age
population
claiming Universal
Credit (Oct 21)

All domestic Abuse crime
for year up to Nov 2021-
16 per 1000
population

What you said you liked



Community assets,
groups, support,
volunteers.



Green Space, parks &
wildlife areas.



**Community Spirit &
pride.** Family,
neighbours, people

What you would like to improve



Community safety, Police
visibility, Access to Rossington
Police station, ASB, drugs, off
road bikes.



Improving road safety,
pedestrian safety, volume
& speed of traffic.



**Improving facilities for
young people,** Places to go
& activities

"I want
somewhere to
hang out "

"A lot of green open spaces
around the village which
encourages the family to
walk and exercise"

"Like the messy church
and the activities at
the welfare "

"The community spirit
has always been
strong"

"Traffic Management
is needed"

"In Austerfield there are
great groups &
Volunteers "

"There is a Large Police station,
Cannot get in & no Police seen
in area."



Conisbrough & Denaby

Overview

The Villages of Conisbrough & Denaby are roughly midway between Doncaster and Rotherham, and run alongside the River Don. The Ward has a population of 16,495

Denaby Main was built by the Denaby Main Colliery Company to house its workers and their families hence the strong ex mining community.

It has good transport links and its own train station, Conisbrough Train Station.

It is home to the Historical Conisbrough Castle and has its own small Town Centre.

It has great access to green space and the TPT with Kingswood activity centre and several parks, Flower Park being one of them. Denaby Craggs & Denaby memorial park are both receiving capital investment as part of the Future parks work.

This ward has the following plans: Denaby Community plan

Key facts about your community

All age Population
of **16,495**

Healthy Life
Expectancy- (in % avg.)
Males: 77.3
Females: 80.5

31% of
Conisbrough
Denaby are in
England's most
deprived 10%

Crime Rate
109 per 1000
population

19%
Of households in fuel
poverty

ASB Crime Rate
25 per 1000
population

6% of working
age population
claiming Universal
Credit (Oct 21)

All domestic Abuse crime
for year up to Nov 2021-
24 per 1000
population

What you said you liked



Community Spirit & pride Neighbours, Family & friends



Green Space, parks, castle & its history.



Community assets, groups, Family Hub, Youth club, allotments, Church

What you would like to improve



Community safety, Police visibility, Feeling safe, ASB, drugs, gangs, off road bikes.



Environment, cleaner streets, littering, street lighting & CCTV.



Green space, safer parks, more facilities.

"Denaby Youth Club "

"Love to play with friends at School + Park. Like my Family, going to Denaby Main Primary. Like home bargains "

"Nurseries and f hub – very supportive and courses are good "

"I can see the Castle from my House, shops are close by, everything I need really

"Sometimes I feel unsafe in village centre, especially after dark"

"Need Cleaner Streets"

"Nice place with more community activity and social groups "



Edlington & Warmsworth

Overview

Edlington & Warmsworth ward is a village and Parish Council lying to the south west of Doncaster, with a population of 12,093

Edlington has a strong Ex Mining heritage with the Yorkshire Main Colliery once situated in the Village. It has a small Town feel with many local shops and a library. Edlington has great access to Green spaces, Martin Wells lakes, and Nature reserve. Edlington Pit woods are receiving capital investment as part of the Future Parks work.

Warmsworth has an Ofsted rated outstanding School Warmsworth Primary, Great access to green space and the Trans Pennine trail as well as, great transport links to Sheffield and other Neighbouring towns and cities.

This ward has the following plans: Edlington neighbourhood plan, Edlington community plan

Key facts about your community

All age Population of **12,093**

Healthy Life Expectancy- (in % avg.)
Males: 77.7
Females: 81.9

25% of Edlington, Warmsworth are in England's most deprived 10%

Crime Rate
114 per 1000 population

19% Of households in fuel poverty

ASB Crime Rate
26 per 1000 population

7% Of working age population claiming Universal Credit (Oct 21)

All domestic Abuse crime for year up to Nov 2021-
19 per 1000 population

What you said you liked



Community Spirit & pride, Family, friend & Neighbours.



Green Space, parks & walks, martin wells lake, pit wood. Trans Pennine trail.



Amenities, good shops & access to support services.

What you would like to improve



Community safety, Police visibility, Feeling safe, ASB, drugs, gangs, off road bikes, empty properties.



Environment, cleaner streets, littering, aesthetics of shops.



More for young people. Place to go, activities, bike track

"Love that there is a nature reserve at the top of the road"

"The majority of the people who live in Edlington are the salt of the earth. Good down to earth hard working socially minded folk"

"I don't drive there are great public transport links with buses, short Taxi to centre and local shops"

"School time parking on our road and on occasions dangerous driving on Mill Lane"

"There is not enough to do, a bike track would get us of the streets"

"Unruly behaviour with the motorbikes and litter"

"Good walks to take my dogs out"



Finningley

Overview

The Ward is made up of several villages, Auckley, Blaxton, Branton, Cantley 6 area, Finningley, Hayfield Green and Old Cantley. It has a population of 17,109

The ward lies about six miles from the centre of Doncaster and is just a short distance from Doncaster's Yorkshire Wildlife Park.

It is known for its airport, formerly RAF Finningley. The station housed a 'V' force of Vulcan bombers in the Cold War.

It is also home to the Grade II listed Georgian manor house Cantley Hall, and Hayfield fishing lakes

This ward has the following plans: Finningley neighbourhood plan.

Key facts about your community

All age Population of **17,109**

Healthy Life Expectancy- (in % avg.)

Males: 82.6

Females: 84.1

0% of

Finningley ward are in England's most deprived 10%

Crime Rate

46 per 1000

population

ASB Crime Rate

19 per 1000

population

11%

Of households in fuel poverty

3%

Of working age population claiming Universal Credit (Oct 21)

All domestic Abuse crime for year up to Nov 2021-

9 per 1000

population

What you said you liked



Community assets, groups, centres, volunteers



Green Spaces, protecting these, rural character of some villages.



Community Spirit & pride. Family People, friends

What you would like to improve



Community safety, Police visibility, road & pedestrian safety, volume & speed of traffic, HGV's.



Improved amenities, shops, services & access to support, Financial, debt advice. Cheaper travel



More activities for young people.

"Volume/ Speed/ Traffic/ Pedestrian safety & Car parking is the main Priority"

"There are vulnerable people in this area – they need help and need to be made aware of what help is out there"

"Branton, it's a quiet place and crime rate is very low"

"Like the green space, and want to protect them"

"In Auckley the Village Feel and community life should be preserved"

"Regular bus service – but fares are very high"

Mexborough

Overview

Mexborough was historically part of the West Riding of Yorkshire; Mexborough has a population of 15,600.

It is situated between Manvers and Denaby Main, it lies on the River Don close to where it joins the River Dearne. Mexborough has its own town Centre and market area, with its own Hospital the Mexborough Montague, and great transport links with a bus and train station.

The earliest known written reference to Mexborough is found in the Domesday Book of 1086

This ward has the following plans: Mexborough community plans.

Key facts about your community

All age Population of **15,600**

Healthy Life Expectancy- (in % avg.)
Males: 75.1
Females: 78.9

45% of Mexborough ward are in England's most deprived 10%

Crime Rate
121 per 1000 population

21% Of households in fuel poverty

ASB Crime Rate
26 per 1000 population

7% Of working age population claiming Universal Credit (Oct 21)

All domestic Abuse crime for year up to Nov 2021-
26 per 1000 population

What you said you liked



Community spirit, the people & Family



Town Centre, variety of shops, easily assessable.



Community groups, organisations, Family Hub, Befriend.

What you would like to improve



Community safety, Police visibility, feeling of safety, ASB, Drugs, gang crime.



Town centre, and market place, investment, own Town Council.



More activities for young people. More provision, place to deliver service

"It used to be a thriving market town...The good shops and market...You could get everything you needed"

"I like that I have facilities close to me, I've got everything I want in Mexborough"

"More stuff for kids to do"

"I Like Mexborough, I like the people it's a nice friendly place."

"Don't feel safe in Particular neighbourhoods where anti-social behaviour and drug use is prevalent"

"We need our own Town Council as we don't feel part of Doncaster"



Tickhill & Wadworth

Overview

The Ward is made up of several villages, Braithwell, Loversall, Micklebring, Stainton, Tickhill, Wadworth and Woodfield Plantation. It has a population of 11,282.

Tickhill is a town and civil parish and lies eight miles South of Doncaster. The Ward has great access to green space and has a rural theme.

Tickhill ward is home to Loversall Lakes, Quarry farm that is popular for fishing and the fields surrounding are often used for Clay pigeon shooting.

Notable buildings in Tickhill include the ruins of Tickhill Castle and Wadworth Hall

This ward has the following plans: Tickhill neighbourhood plan

Key facts about your community

All age Population of **11,282**

Healthy Life Expectancy- (in % avg.)

Males: 81.4

Females: 84.4

0% of Tickhill

ward are in England's most deprived 10%

Crime Rate

76 per 1000

population

12%

Of households in fuel poverty

ASB Crime Rate

17 per 1000

population

2%

Of working age population claiming Universal Credit (Oct 21)

All domestic Abuse crime for year up to Nov 2021-

11 per 1000

population

What you said you liked



Community spirit & pride, friends, family, people



Green space, parks, walks, play areas.



Community groups, organisations. Volunteers

What you would like to improve



Community safety, ASB, road safety, speeding, parking, volume of traffic.



More activities for young people. Places to go,

Activities



Frequency of public transport

"Issue with Heavy Vehicles and increased traffic in Braithwell and Micklebring"

"Excellent community spirit. It is a friendly & safe environment in which to live"

"Poor transport links Wadworth – only 1 bus service approx. once per hour"

"Tickhill is a lovely place but don't have many facilities from young people"

"Woodfield Plantation has good local amenities, good infrastructure"

"Loversall is a nice place to live good for Walks, lots of green areas"

WHAT WE DID WITH WHAT YOU SAID

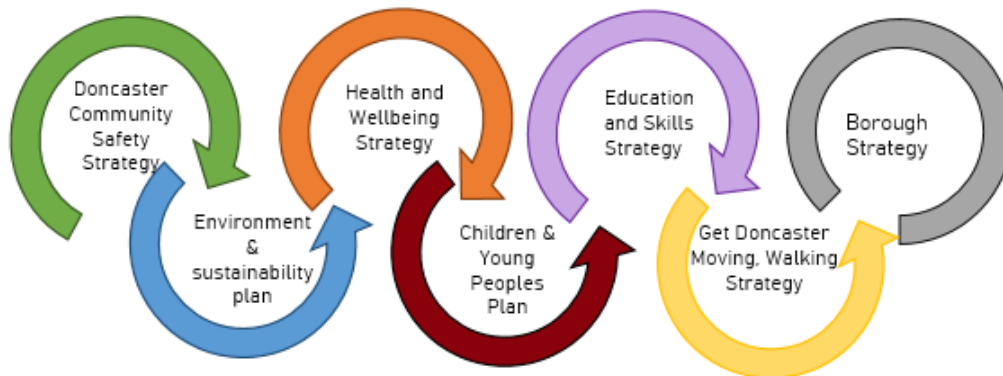
What we did with what you said

Consultation with communities and partners provided each community within the South with data and information that has been looked at in detail.



We talked to key partners from South Yorkshire Police, local and regional health, St Leger Housing and a range of Council Services to confirm what plans and strategies are already in place. These included ...

A sample of the plans and strategies considered

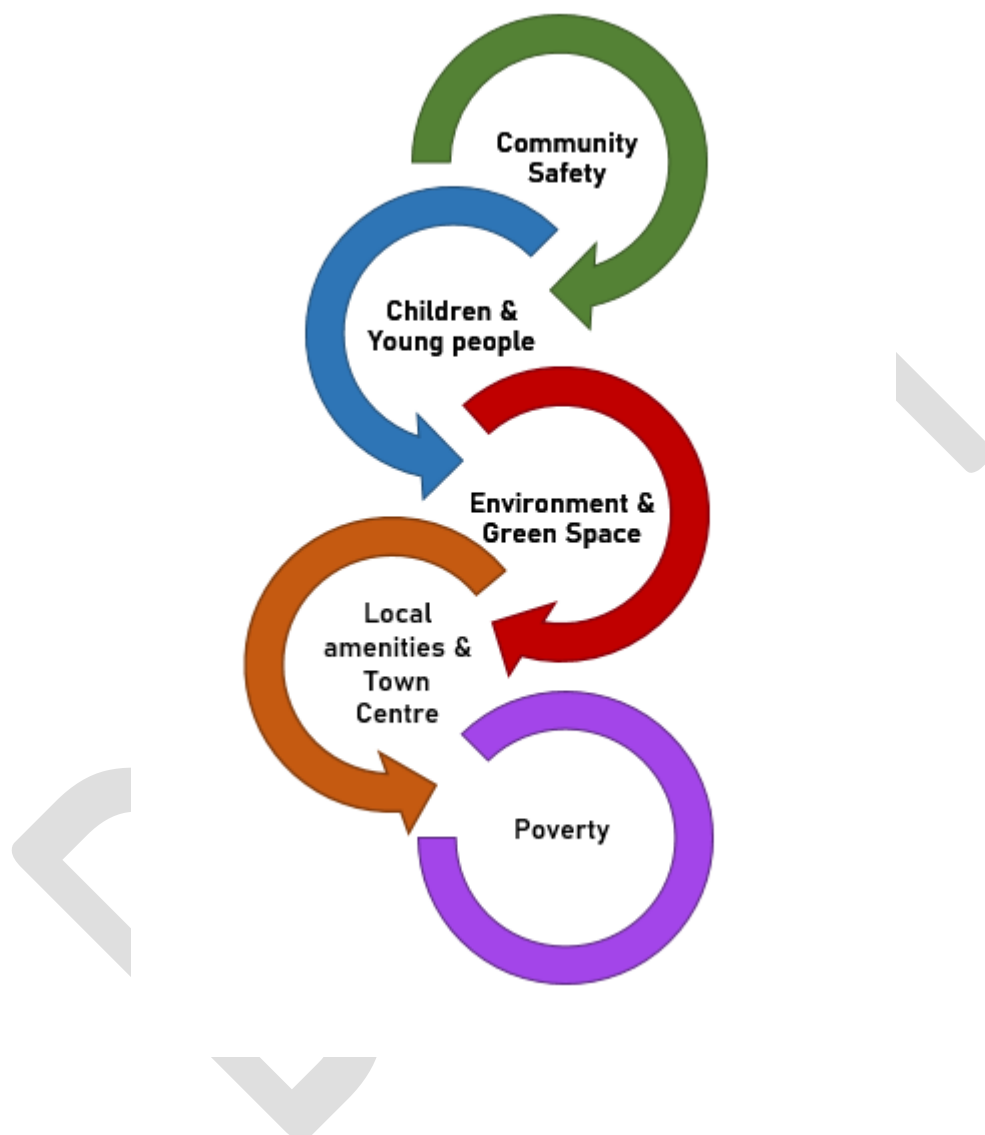


We will make sure we link the actions and activity from existing Strategies and Plans to build on the assets and strengths in our communities and address any gap through...



So what are the South area priorities?

At the beginning of this plan, we stated we would define the priorities for improving the area over the next year. We have outlined how we have analysed the information and have identified the following priorities:



On the following pages, we have illustrated further details of what actions will support improvement for each priority theme and how this will build on and link to existing strategies, plans and activity.

**The plans and strategies detailed in the coming pages are examples of how we are currently working to support these priority areas and are not meant to represent a complete list. Extracts need to be considered in the context of the whole plan or strategy document.*

Doncaster Community Safety Partnership

Effectively manage anti-social behaviour through proactive and responsive approaches, supported by improved mechanisms to report and respond to incidents.

Improve community confidence in reporting anti-social behaviour by providing reassurance that we will listen, understand and build relationships with victims and communities.

Deliver youth diversion schemes to ensure young people avoid criminal convictions and are supported in the community, where appropriate.

Reduce the rates of Serious Acquisitive Crime across the borough through targeted interventions in high crime areas.

Tackle the issue of illegal off road bikes & Quads through a partnership approach

Reduce the number of people who experience crime and disorder related to the misuse of substances through the delivery of a comprehensive, accessible, high quality drug and alcohol treatment service

Children and Young Peoples Plan LOCYP engagement and Partnership

Work with the Safer Stronger Doncaster partners to reduce ASB in and around Doncaster.

Increase the availability and quality of activities, groups and programmes for CYP, including our most vulnerable. Plan community and celebratory events for CYP.

Doncaster Borough Strategy 'Doncaster Delivering Together'

Tackle crime, ASB, and the root causes

Tackle domestic abuse and its root causes

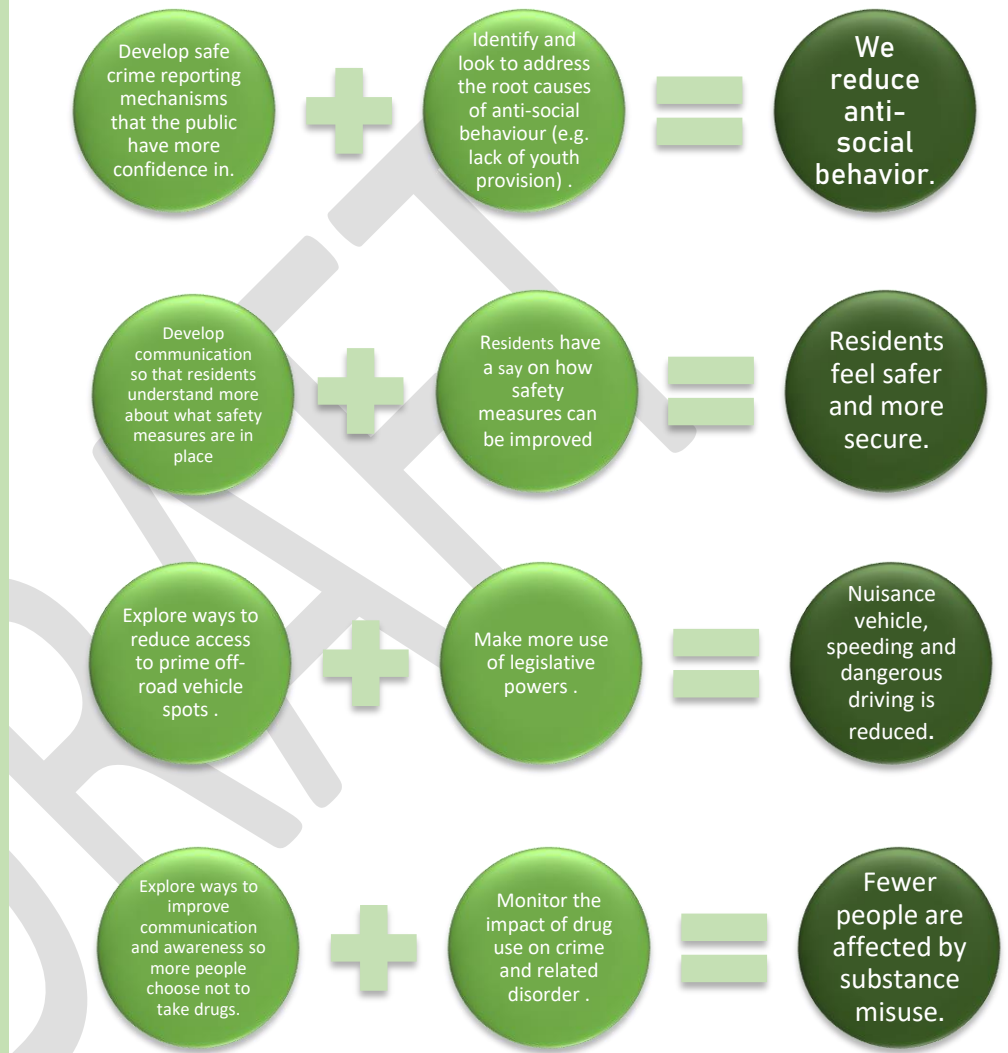
Doncaster Get Moving - Walking Strategy

Work with South Yorkshire Safer Roads Partnership to ensure Road Safety Training is offered to all primary schools in the Borough.

Work with South Yorkshire Safer Roads Partnership to explore how road safety training and promotional opportunities could be delivered through existing engagement and training opportunities.

You asked us to improve Community safety

Through coordination, continuous engagement, collaboration and communication we will work together to build on local strengths and assets across South locality to complete the following actions in order to reach each outcome.



*The plans and strategies detailed in the coming pages are examples of how we are currently working to support these priority areas and are not meant to represent a complete list. Extracts need to be considered in the context of the whole plan or strategy document. They do not include core service delivery of key partners.

Supporting Plans and Strategies

Cultural Strategy

Joined up marketing regarding the cultural offer for children and young people.

Doncaster Local Offer

Children and young people's forums within the council and with our partner organisations, through a model of 'for young people, by young people'.

Supporting our voluntary, community and faith sectors to increase high quality, accessible youth provision across the borough.

VCF sector working with C&YP to enable them to build their quality systems and access funding to deliver services.

Children and Young Peoples Plan

Team up with lots of different groups and services to deliver activities and programmes.

Children & Young People Activities (Formerly Youth Strategy)

Engage with initiatives such as National Youth Work programmes, UK Youth Awards, British Youth Council, UK Youth Parliament and Young Advisors

Doncaster Borough Strategy 'Doncaster Delivering Together'

Increase the availability and invest in the quality of activities for families and young people

Use Family Hubs to deliver a range of activities, services and information.

Provide more equitable and inclusive opportunities to enjoy art, culture, sport and community activities.

Well Doncaster Community Plans

Provide CPD and training to all voluntary and paid staff who engage with young people to promote the benefits of physical activity

Doncaster Local Plan sustainability appraisal

Get people involved in local issues Make people proud of their own community and Doncaster

Environmental & sustainability strategy

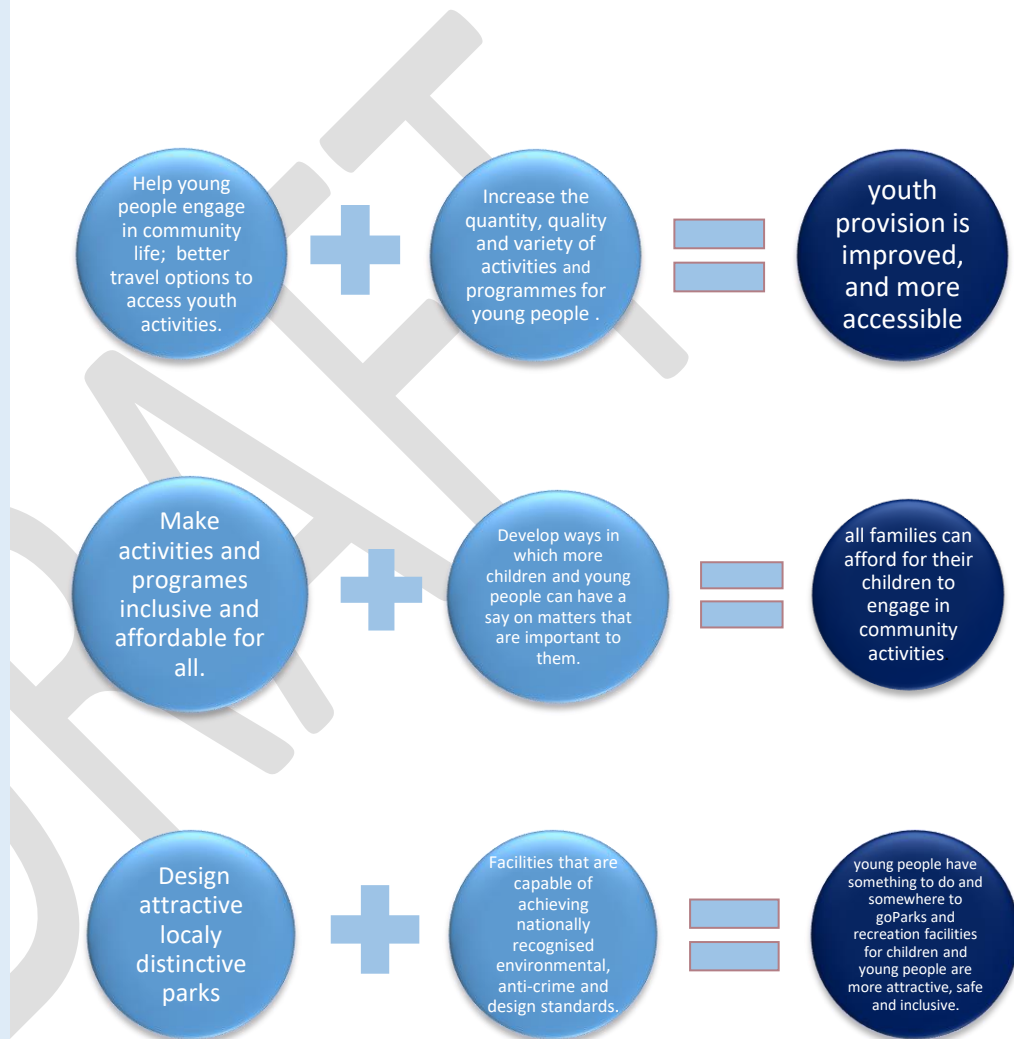
Use the Future Parks Programme to develop, implement and share best practice; and integrate new technologies into parks provision through the Smart Parks project. 15 bespoke parks identified across Doncaster to improve accessibility to physical activity & sports initiatives.

Community safety partnership

Deliver youth diversion schemes to ensure young people avoid criminal convictions and are supported in the community, where appropriate

You asked us to improve Children & Young people provision

Through **coordination, continuous engagement, collaboration and communication** we will **work together to build on local strengths and assets** across the East locality to complete the following actions in order to reach each outcome.



*The plans and strategies detailed in the coming pages are examples of how we are currently working to support these priority areas and are not meant to represent a complete list. Extracts need to be considered in the context of the whole plan or strategy document. They do not include core service delivery of key partners.

Supporting Plans and Strategies

Doncaster Local Plan sustainability Appraisal

Provide more greenspaces and trees

Create new areas of biodiversity value

Offset / compensate for the loss of habitats and species as a result of development

Protect, maintain and improve sites of geodiversity importance

Environment & Sustainability

Use the Future Parks Programme to develop, implement and share best practice; and integrate new technologies into parks provision through the Smart Parks project.

15 bespoke parks identified across Doncaster to improve accessibility to physical activity & sports initiatives

Develop and implement a tree-planting programme, to include various sized sites from individual trees in gardens to strategic woodland creation where feasible

Maintain and improve current and future green infrastructure assets.

Support the continued development of the Doncaster Green Space Network – enhancing social & community capacity, developing local knowledge share/best practice.

Robust and fair enforcement activity in response to fly tipping and littering

Improve awareness of legal waste disposal contractors and the consequences of using unauthorised contractors

Effective and accessible communication and engagement to discourage fly tipping and littering.

Doncaster Borough Strategy 'Doncaster Delivering Together'

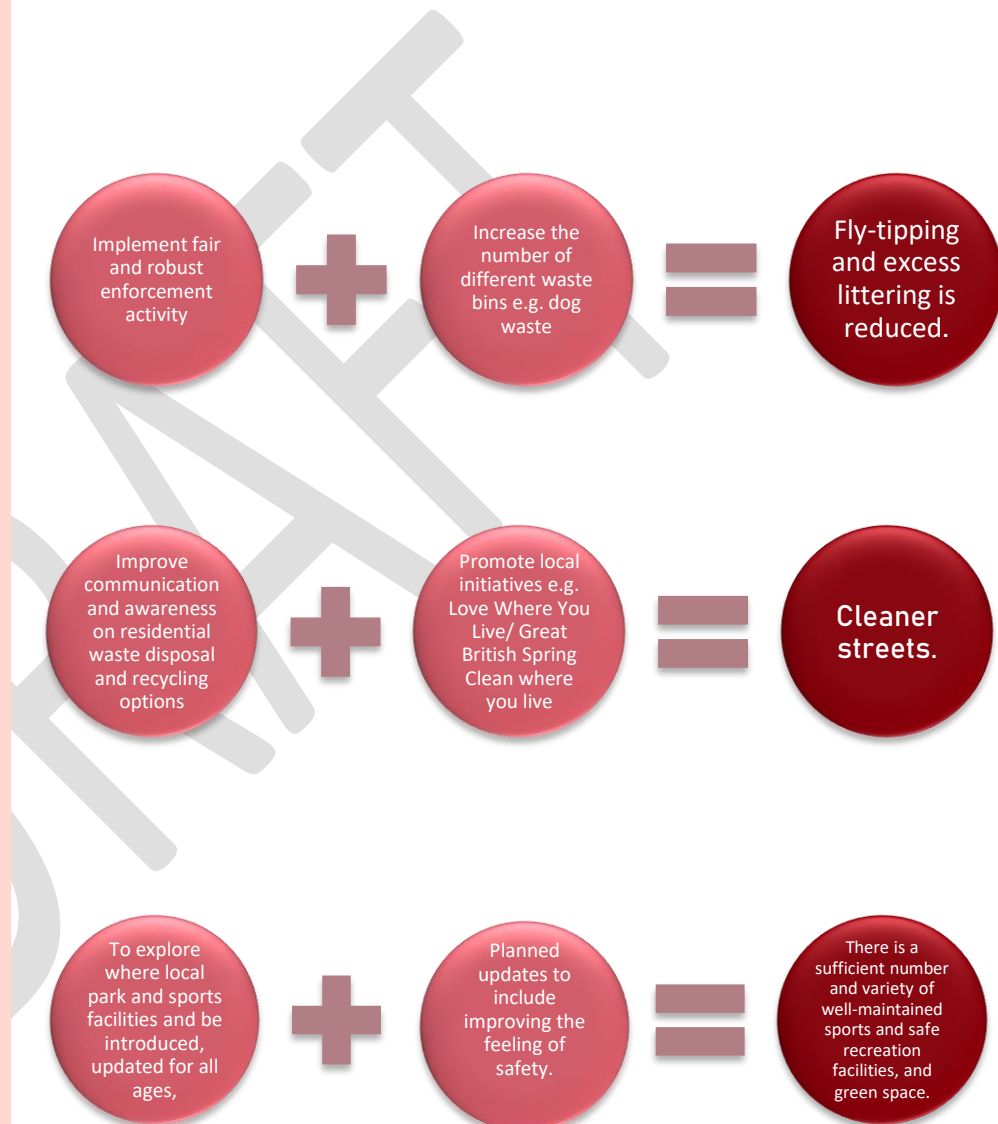
Reduce fly tipping and graffiti and regularly clean the streets and roads

Tickhill Neighbourhood Plan

To secure safe environment for all, particularly with respect to road safety & flooding

You asked us to improve Environment & Green space

Through **coordination, continuous engagement, collaboration and communication** we will **work together to build on local strengths and assets** across the South locality to complete the following actions in order to reach each outcome.



*The plans and strategies detailed in the coming pages are examples of how we are currently working to support these priority areas and are not meant to represent a complete list. Extracts need to be considered in the context of the whole plan or strategy document. They do not include core service delivery of key partners.

Supporting Plans and Strategies

Doncaster Local Plan sustainability Appraisal

Ensure places can be accessed via public transport

Support Existing Businesses

Doncaster Borough Strategy 'Doncaster Delivering Together'

Better, connect the Borough with reliable, appropriate and affordable public transport

Doncaster Core Strategy

Protect and enhance local amenities that are well designed, attractive, fit for purpose and locally distinctive;

Mexborough Master plan

Vision: Mexborough Futures will create a place where people want to live, work, shop & visit

Create an attractive & welcoming experience upon arrival to the Town centre.

Edlington Neighbourhood Plan

To create an attractive and health environment that enable people and businesses to prosper and flourish, Create an environment that makes it attractive for self-employment, small and medium sized businesses & shops

Rossington Neighbourhood plan

To ensure a good range of community facilities & services that meet the present & Future needs. Reinforcing the role of Rossington village Centre. Create an environment that makes it attractive for self-employment and other businesses

Tickhill neighbourhood plan

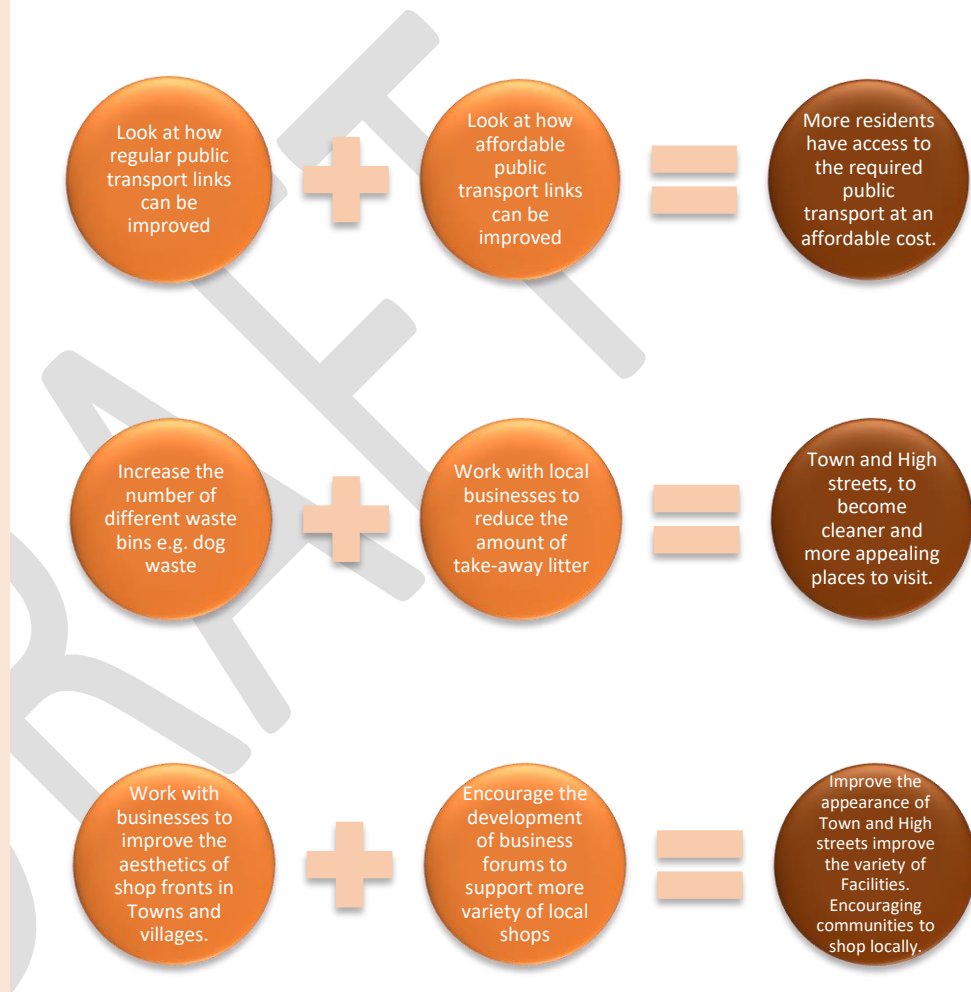
Tickhill aims to develop its character as a small historic market town, & encourage a wide range of successful businesses & organisations

Bawtry Neighbourhood Plan

Create a plan for Bawtry that will enable the town to develop onto a thriving and vibrant market town, proud of its heritage.

You asked us to improve Local amenities & Town centres

Through **coordination, continuous engagement, collaboration and communication** we will **work together to build on local strengths and assets** across the East locality to complete the following actions in order to reach each outcome.



*The plans and strategies detailed in the coming pages are examples of how we are currently working to support these priority areas and are not meant to represent a complete list. Extracts need to be considered in the context of the whole plan or strategy document. They do not include core service delivery of key partners.

Supporting Plans and Strategies

Doncaster Borough Strategy

Work towards a Doncaster where everyone can secure the income they need to have a decent minimum living standard and access debt advice and support if needed

Education and Skills 2030 Strategy

Reform our Post-16 education and skills system to equip residents with the skills, ambition and attributes that allow them to thrive in life and work

Doncaster Local Plan

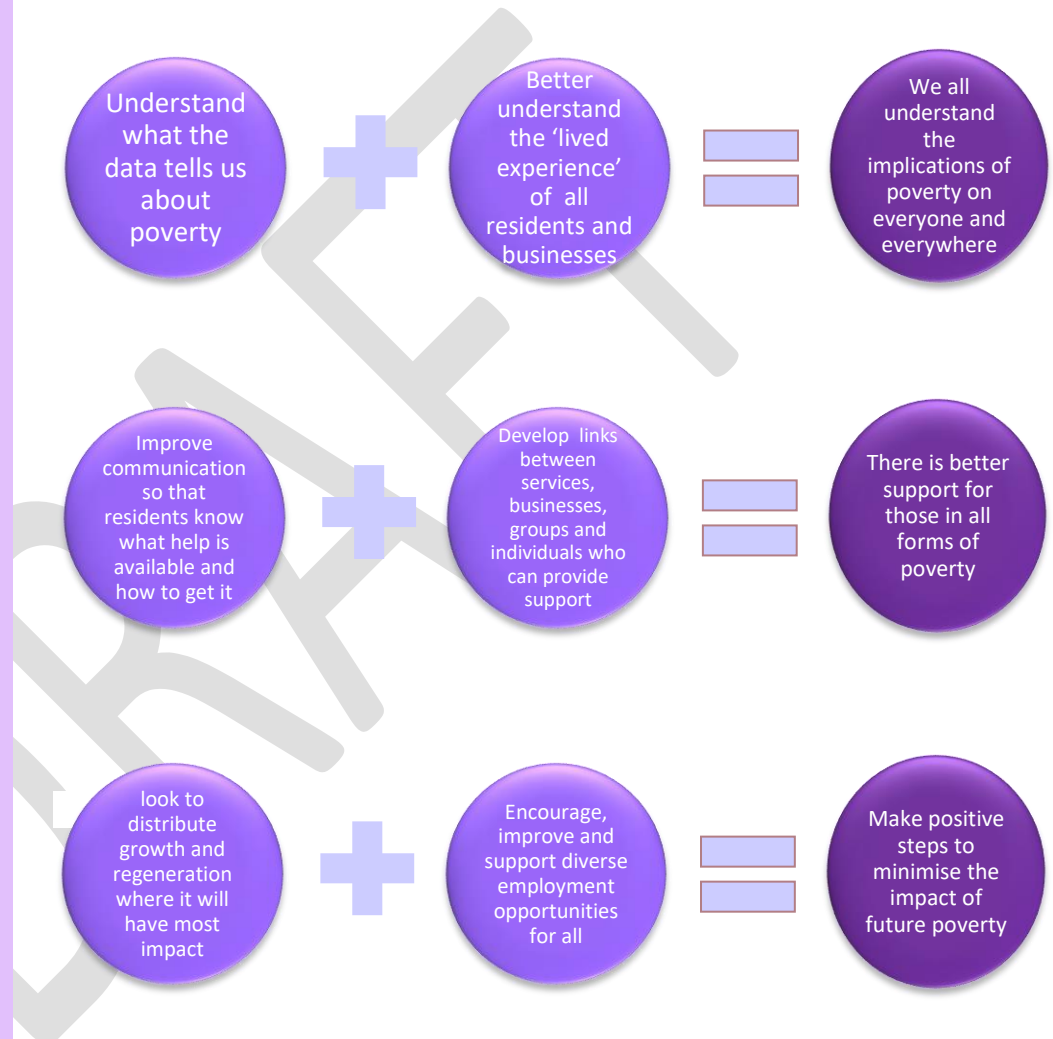
Stimulate regeneration to tackle deprivation especially in the most disadvantaged areas and ensure an inclusive approach for those at risk of poverty

Doncaster Core Strategy

Distribute growth and regeneration where it would do most good in terms of supporting prosperous and sustainable communities by improving the economic performance of towns, promoting regeneration and tackling deprivation

Data tells us we need to improve support for preventing poverty.

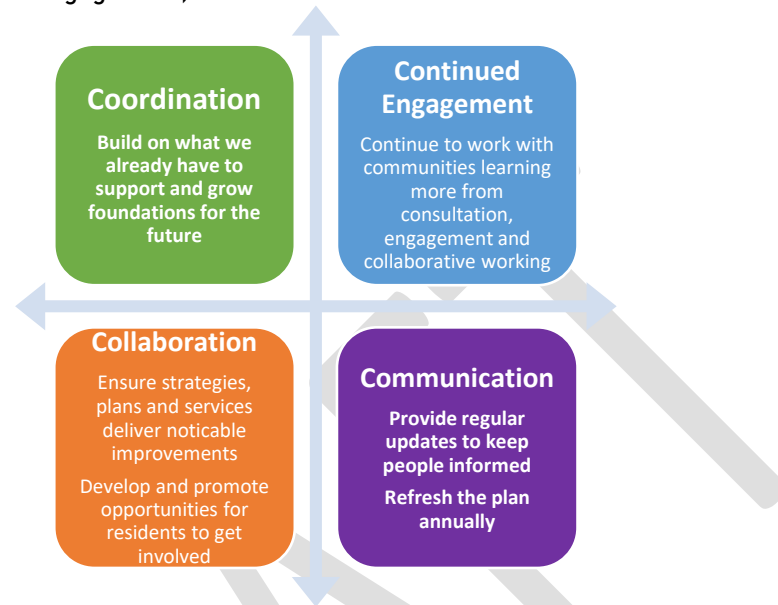
Through **coordination, continuous engagement, collaboration and communication** we will **work together to build on local strengths and assets** across the South locality to complete the following actions in order to reach each outcome.



*The plans and strategies detailed in the coming pages are examples of how we are currently working to support these priority areas and are not meant to represent a complete list. Extracts need to be considered in the context of the whole plan or strategy document. They do not include core service delivery of key partners.

WHAT'S NEXT FOR LOCALITY PLANS?

People contributing to the priorities for improving their community is at the heart of this plan. Through the delivery of the Locality Plan, Over the next 12 months we will endeavour to build on the local assets and strengths in our communities to deliver this plan. We will seek to achieve this through effective coordination, continued engagement, collaboration and communication



Engaging with local groups and networks is a continuous part of working Together Well in localities. As a resident who lives in the South Locality, you are encouraged to get involved in the plans activities and share the planned actions with as many people as possible, especially people working and living in Rossington & Bawtry , Conisbrough & Denaby, Edlington & Warmsworth, Finningly, Mexborough, Tickhill & Wadworth.

What changes will I see?

In addition to the priorities identified in the plan, Team Doncaster are also changing the way we work in order to ensure support is being provided at a local level. There are a number of these changes that will happen imminently. These include:

- Relevant teams will no longer be based centrally at the Doncaster Council Civic Office but will instead have an office base within the South locality. This will mean that our officers are embedded into the community and more easily accessible to residents.
- We will be opening Your Community Hubs at a number of locations across the South Locality, these will provide a drop-in opportunity for people needing support
- Your Life Doncaster website will now feature a dedicated information page for the South locality (www.yourlifedoncaster.co.uk/south). On this page you will be able to find out important information about your area such as what's on, local community groups, local contact details and news and information about how the plan is progressing
- There will be more Well Doncaster Officers in your community. Our Well Doncaster Officers have been placed in communities to support the delivery of grassroots projects that will have a lasting impact on people's lives. They are there to support the strengthening of our communities and improve health and wellbeing of residents in Doncaster, and as part of this plan, we are doubling the amount of Well Doncaster Officers in each area to continue the positive work they are already doing.

We need everybody from council workers to voluntary groups and residents themselves to get involved with developing and delivering the plan. If you want to support us to help the South Locality thrive then we would love to hear from you.

**'Shape the future of your South Community.
Get involved'**

Contact us at

YourVoice@doncaster.gov.uk

Useful websites for more information:

www.teamdoncaster.org.uk

www.yourlifedoncaster.co.uk

www.voluntaryactiondoncaster.org.uk

DRAFT